

87Series

BENEFITS

Corrosion resistant metal
Easy to assemble
Run dry without damage
Self priming

FEATURES

Built with shut-off switch
Pluggable connectors
Quiet and High efficient performance
Thermal protection equipped
Variety voltage version available

APPLICATIONS

RV & Marine water system power source
Sprayer system
Domestic water system



COMMON MODEL

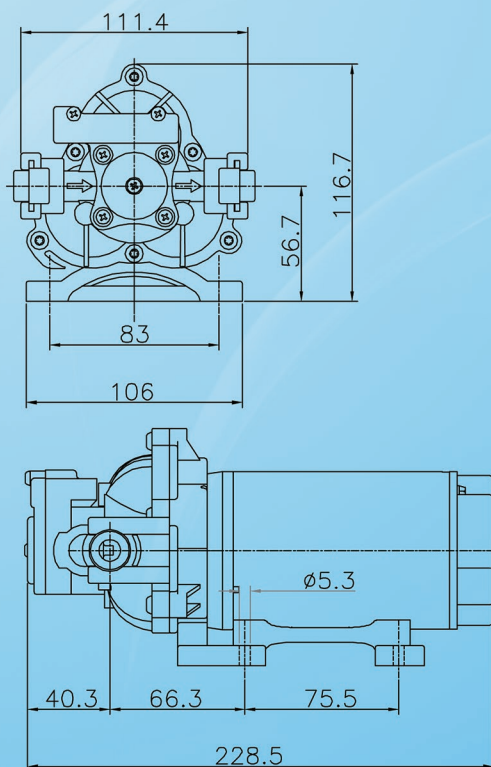
Name	Voltage	Flow rate	Shot-off
Basic	12VDC	2.8GPM	65psi
Basic Plus	12VDC	3.5GPM	65psi
General	24VDC	2.8GPM	65psi
Park resort	115VDC	3.5GPM	65psi



AQQ Pumps and Accessories

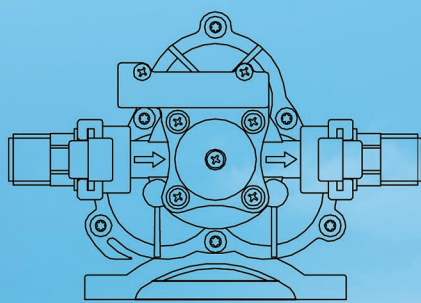
<http://www.aqq.com.tw>

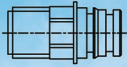
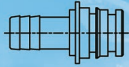

Dimension:MM



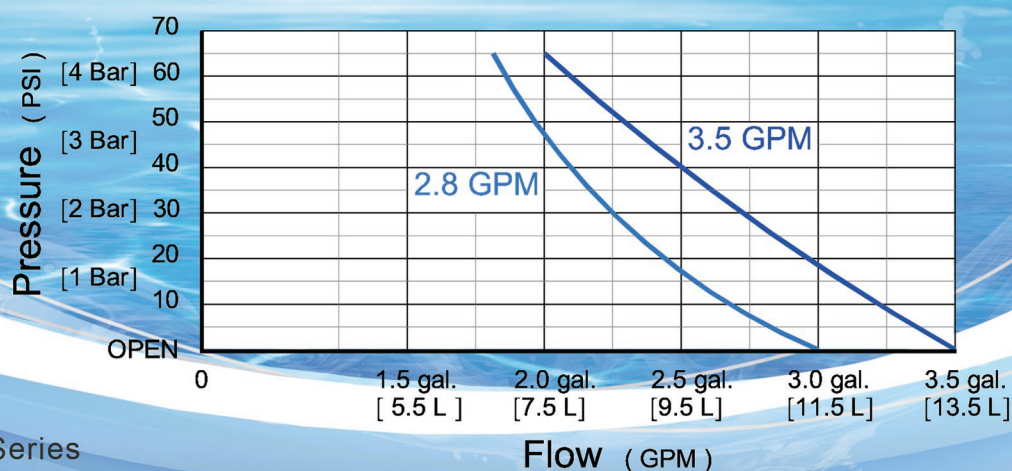
Specifications:

☉ Design	Positive displacement 3 chamber diaphragm pump
☉ Motor	Permanent magnet
☉ Voltage	12, 24, 36, 48, VDC (AC) 115/230VAC all available
☉ Ports	Open port
☉ Material	Santoprene™ & Polyamide
☉ Pressure control	Adjustable shut-off switch



Open Port Compression Fitting Options		(custom available)
1/2" - 14 NPT #TN0102 I#	1/2" HOSE BARB #HI0102 I#	
		

Flow Curve



Test Condition

- TEST MODEL : 87 Series
- INLET PRESSURE : 0 psi

Note:

Technical specification sheets are available for individual model numbers, AQ&Q reserves the right to update specifications, change prices, or make substitutions without prior notice.